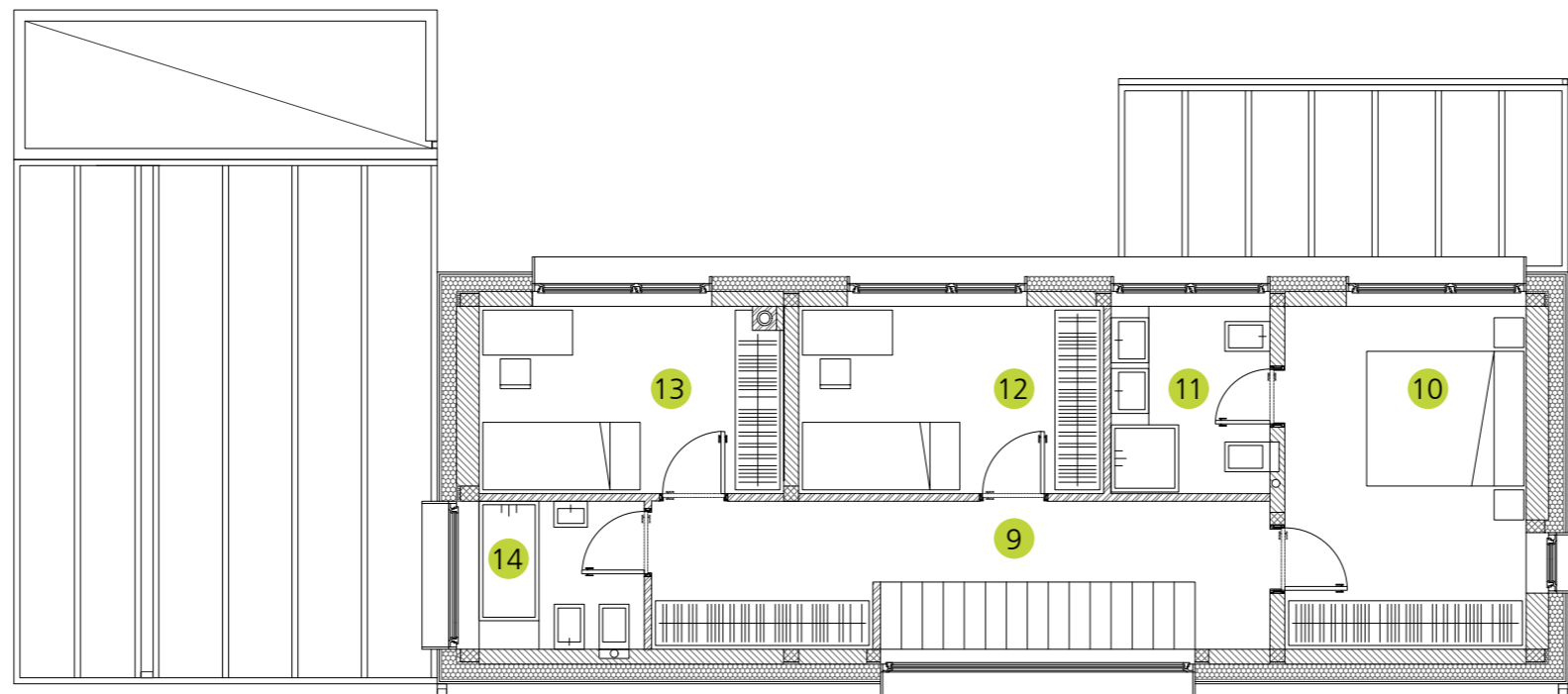


Tloris nadstropja I M 1:100

9 hodnik s stopniščem	16,41m ²
10 spalnica	14,75m ²
11 kopalnica 1	5,26m ²
12 otroška soba 1	10,10m ²
13 otroška soba 2	9,96m ²
14 kopalnica	4,41m ²

Nadstropje neto: 60,89m²
Nadstropje bruto: 83,05m²

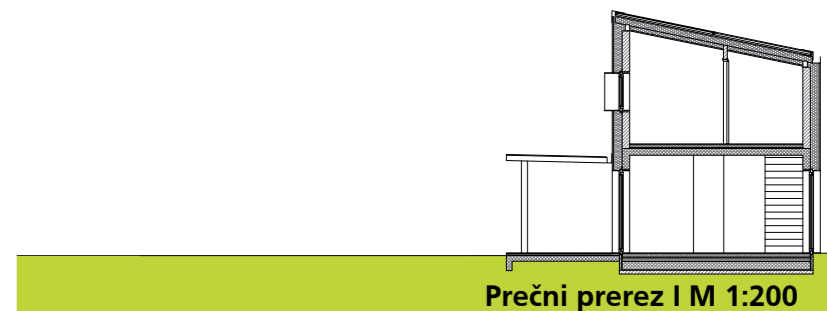
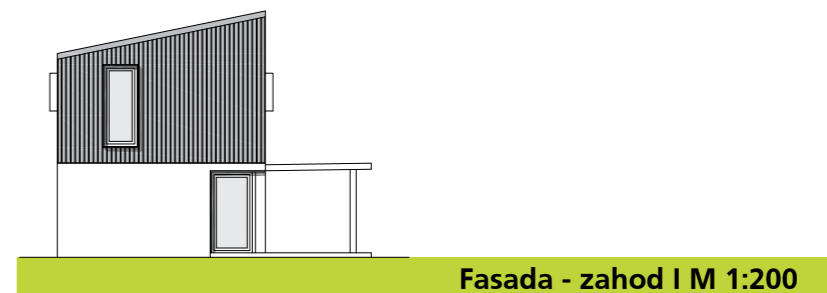
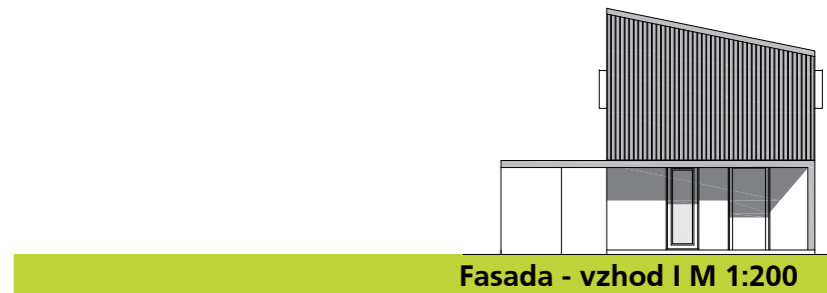
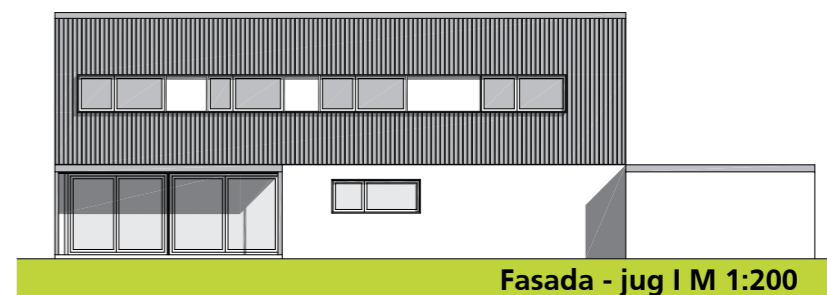
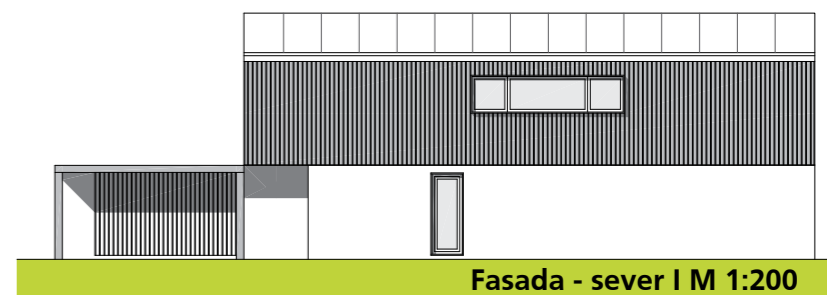
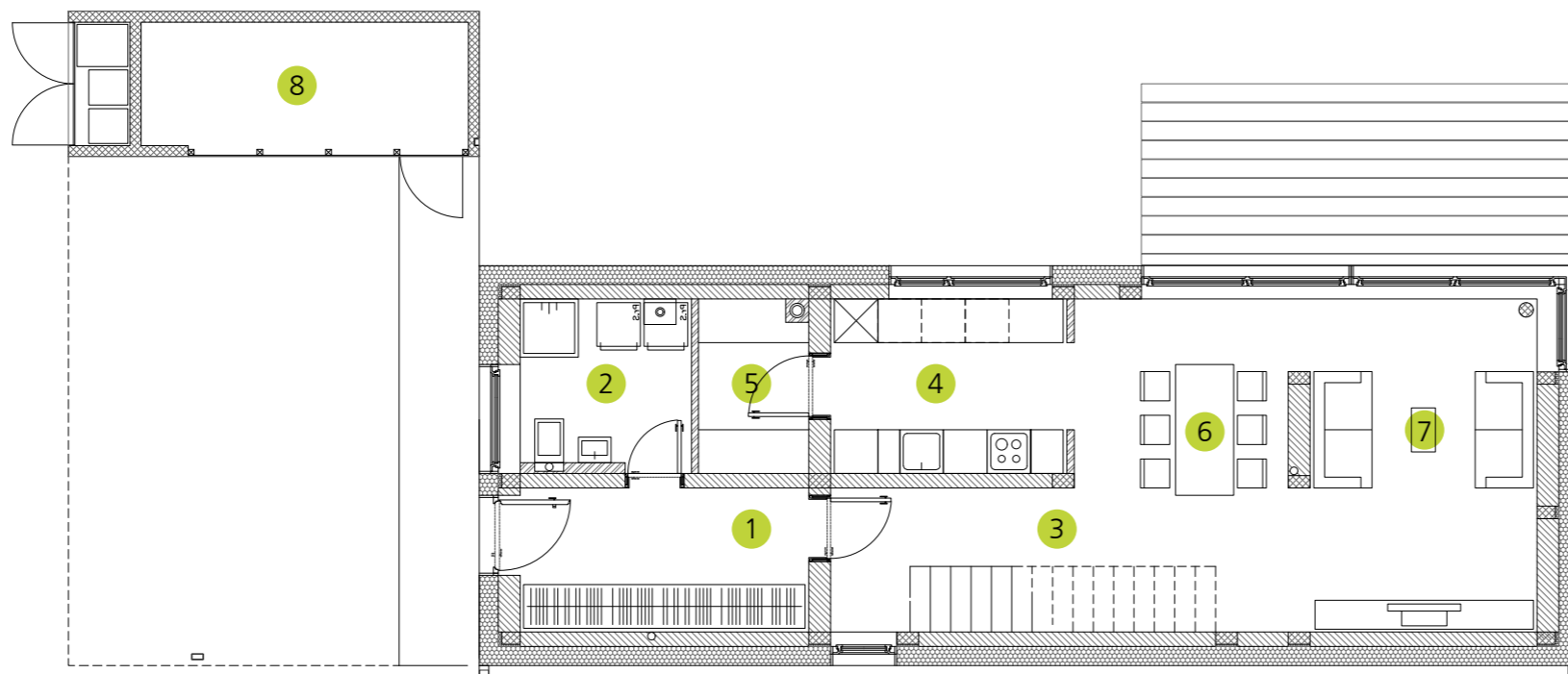


Tloris pritličja I M 1:100

1 predprostor	7,86m ²
2 stranišče	5,44m ²
3 hodnik s stopniščem	12,45m ²
4 kuhinja	7,79m ²
5 shramba kuhinje	3,64m ²
6 jedilnica	7,65m ²
7 dnevni prostor	15,18m ²
8 lopa	6,11m ²

Pritličje neto: 66,12m²
Pritličje bruto: 94,35m²

Skupaj neto: 127,01m²
Skupaj bruto: 177,40m²



TIP E - prikazi za zidano gradnjo